

# OTIS

Otis College of Art and Design  
9045 Lincoln Boulevard, Los Angeles, California 90045  
Telephone 310 665 6800 Website [www.otis.edu](http://www.otis.edu)

## MEDIA RELEASE

### FOR IMMEDIATE RELEASE

Press Contact: Kathy MacPherson

[kmacpherson@otis.edu](mailto:kmacpherson@otis.edu) / (310) 665.6909



James Aldridge, *The Gathering*, 2010, Acrylic on canvas

**Otis College of Art and Design's Ben Maltz Gallery is pleased to present:**

## ***Dusk to Dusk: Unsettled, Unraveled, Unreal***

**A Group Exhibition on view April 11 – July 26, 2015**

LOS ANGELES, CA – March, 2015 – The Ben Maltz Gallery at Otis College of Art and Design is pleased to present *Dusk to Dusk: Unsettled, Unraveled, Unreal*, a sublimely curated exhibition that acknowledges the "unsettled, unraveled, unreal" in contemporary experience. The exhibition opens on Saturday, April 11, 2015 and is on view through July 26. An opening reception takes place Saturday, April 11, 4pm-6pm, with a walk-thru with *Dusk to Dusk* curator Richard Rinehart at 4:30pm.

Drawn from a single private European collection, *Dusk to Dusk* presents thirty-two powerful and haunting works of painting, photography, sculpture, and video by twenty-eight renowned contemporary artists who examine issues of individual isolation, political repression, and collective ennui in the decline of the industrial age.

Curated by Richard Rinehart, Director, Samek Art Museum, Bucknell University, the exhibition features the work of Louise Bourgeois, Marcel Dzama, Tony Cragg, Gilbert & George, Richard Long, Edward Burtynsky, Hiroshi Sugimoto, Erwin Wurm, Matthew Day Jackson, Erwin Olaf, James Aldridge, Salvador Dali, and Ruud van Empel among others. Ruud van Empel and Hideaki Kawashima summon primal anxieties of the body double and removable skin, made more relevant by the rise of virtual, second lives. Gilbert & George, Erwin Wurm, Laura Ford, and Almagul Menlibayeva deploy psychological references to the individual in a society of global displacement, liminal sexualities, and political casualties. Edward Burtynsky and Aristarkh Chernyshev show technology misused, warped, and left in ruins, mocking our technocratic hubris. While others, such as Matt Calderwood, Huma Bhabha, Matthew Day Jackson, and Tony Cragg, among others, take a more abstract approach, expressing a need for balance and intimacy in the ever-expanding human experience.

Together, these artists provide a glimpse into what it means to be an individual during the transition from the twentieth to the twenty-first century, allowing viewers to reflect on past mistakes while reveling in progressive poetics. Each work in this international selection of renowned contemporary artists rewards the viewer with a compelling encounter that will haunt them in the best way imaginable.

**Artists in the exhibition:** James Aldridge, Huma Bhabha, Louise Bourgeois, Edward Burtynsky, Matt Calderwood, Aristarkh Chernyshev, Tony Cragg, Salvador Dali, Desiree Dolron, Marcel Dzama, Laura Ford, Gilbert & George, Matthew Day Jackson, Hideaki Kawashima, Tianbing Li, Richard Long, Jie Luo, Jonathan Meese, Almagul Menlibayeva, Erwin Olaf, Hans Op de Beeck, Yang Shaobin, Anouk Stekete, Hiroshi Sugimoto, Ruud van Empel, Levi van Veluw, Anne Wenzel, Erwin Wurm.

*Dusk to Dusk* was organized by the [Samek Art Museum at Bucknell University](http://www.samek-art-museum.org), curated by Richard Rinehart, Director of the Samek Art Museum, with works generously loaned from THE EKARD COLLECTION. The exhibition is toured by [Curatorial Assistance Traveling Exhibitions](http://www.curatorialassistance.com), Pasadena, California.

--more--

**Related Events:**

**Opening Reception & Curator Walk-Thru**

Saturday, April 11, 4-6pm, Free

Walk thru with curator Richard Rinehart, 4:30pm

*Additional programs to be announced*

-----  
**Location:** Otis College of Art and Design, 9045 Lincoln Blvd, Los Angeles, CA 90045

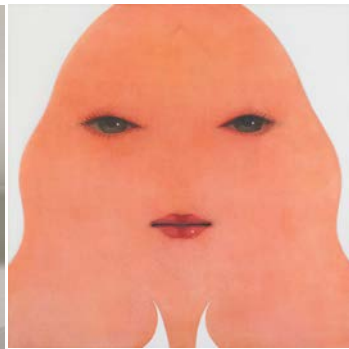
**Admission and Parking:** Free. Visitor parking in structure on La Tijera.

**Hours:** Tue-Sat 10am-5pm / Thu 10am-7pm / Sat-Sun 12-4pm / Closed May 23-25, July 4

**Gallery Tours:** [www.otis.edu/ben-maltz-gallery/schedule-tour](http://www.otis.edu/ben-maltz-gallery/schedule-tour)

**Gallery Info:** 310.665.6905, [gallerinfo@otis.edu](mailto:gallerinfo@otis.edu), [www.otis.edu/benmaltzgallery](http://www.otis.edu/benmaltzgallery)

**More Otis Events:** [www.otis.edu/calendar](http://www.otis.edu/calendar)



Top L-R: Edward Burtynsky, *Shipbreaking #1*, 2004, Chromogenic color print; Louise Bourgeois, *Le Trani Episode*, 1971, Bronze, silver nitrate and gold patina; Hideaki Kawashima, *130*, 2004, Acrylic on canvas; Marcel Dzama, *Welcome to the Land of the Bat*, 2008, Diorama.

Bottom L-R: Anouk Stekettee, *Carin*, 2009, Kodak Edura print; Huma Bhabha, *Untitled*, 2008; Hiroshi Sugimoto, *Fifth Avenue Theatre, Seattle*, 1997, Gelatin silver print.

**About Otis:** Founded in Los Angeles in 1918, Otis College of Art and Design prepares diverse students of art and design to enrich the world through their creativity, their skill, and their vision. The College offers an interdisciplinary education for 1200 full-time students, awarding BFA degrees in Advertising, Architecture/Landscape/Interiors, Digital Media, Fashion Design, Illustration, Graphic Design, Product Design, Painting, Photography, Sculpture/New Genres, and Toy Design; and MFA degrees in Fine Arts, Graphic Design, Public Practice, and Writing. Continuing Education offers certificate programs as well as personal and professional development courses. Additional information is available at [www.otis.edu](http://www.otis.edu)